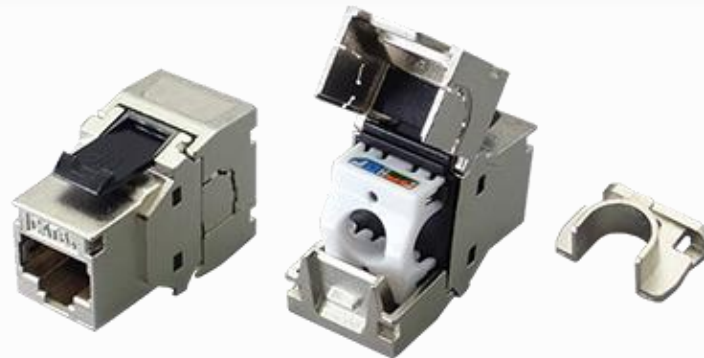


Side Entry Category 6A Shielded Keystone Jack



6A shielded keystone jack supports the 10/100/1G BASE-T Ethernet, as well as advanced new 10G BASE-T Ethernet. The shielded jack with industrial leading transmission performance and provide exceptional levels of headroom, meets and exceeds ANSI/TIA-568.2-D and ISO/IEC 11801 2nd edition Category 6A Class EA standards. Zinc-alloy metal shell balances/eliminates the Alien crosstalk while the data is at high-speed transmission. Knock-out design provides optimal options for the cable coming from the side end and prevents to bend the cable in trunking with limited space to retain installation performance.

Features

- Zinc-alloy metal shell
- Knock-out design to allow side entry of cable
- Tool-free, no additional tool required for termination
- Contacts are phosphor bronze plated with 50 micro inches hard gold
- Dual T568A & T568B wiring
- Polycarbonate 94V0 rated
- 4PPoE compliant in accordance with IEEE802.bt Type 4

Ordering Information

Part No.	Description
IKC1A68TPZA1	RJ45, 8-Conductor Cat.6A , Tool-free, Shielded, 180 degree, side entry
IKC1C68TPZA1	RJ45, 8-Conductor Cat.6A , Tool-free, Shielded, 180 degree, side entry