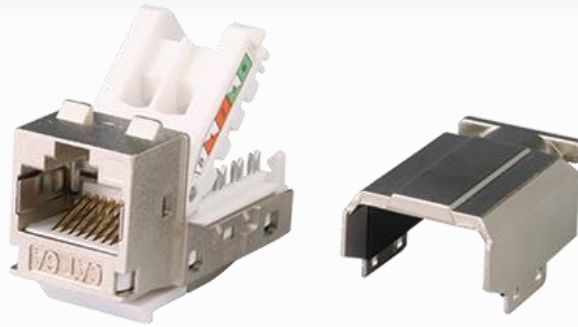


## Category 6A Shielded Keystone Jack



Category 6A shielded keystone jack supports the 10/100/1G BASE-T Ethernet, as well as advanced new 10G BASE-T Ethernet. The shielded jack with industrial leading transmission performance and provide an exceptional level of headroom, meets and exceeds ANSI/TIA-568.2-D and ISO/IEC 11801 2nd edition Category 6A standards. Zinc-alloy metal shell balances/eliminates the Alien crosstalk while the data is at high speed transmission. Narrow width design fits 1U 24-port empty panel for the most efficient use of rack space.

### Features

- Zinc-alloy metal shell
- Tool-free, no additional tool required for termination
- Contacts are phosphor bronze plated with 50 micro inches of hard gold
- Dual T568A & T568B wiring
- Polycarbonate 94V0 rated
- Force EC Cat.8/Class I Channel certified
- 4PPoE compliant in accordance with IEEE802.bt Type 4

### Ordering Information

Part No.	Description
IKC1A68TPZA0	RJ45, 8-Conductor Cat.6A , Tool-free, Shielded, 180 degree, H.D. version
IKC1A68IPZA0	RJ45, 8-Conductor Cat.6A , 110 IDC, Shielded, 180 degree, H.D. version
IKC5A68TPZA0	RJ45, 8-Conductor Cat.6A , Tool-free, Shielded, 180 degree, H.D. version
IKC6A68TPZA0	RJ45, 8-Conductor Cat.6A , Tool-free, Shielded, 180 degree, H.D. version

## Category 6A Shielded Keystone Jack



IKC7A68TPZA0	RJ45, 8-Conductor Cat.6A , Tool-free, Shielded, 180 degree, H.D. version
IKC1B68TPZA0	RJ45, 8-Conductor Cat.6A , Tool-free, Shielded, 180 degree, H.D. version, fits 0.5U panel
IKC7B68TPZA0	RJ45, 8-Conductor Cat.6A , Tool-free, Shielded, 180 degree, H.D. version, fits 0.5U panel
IKC0T68TPZA0	RJ45, 8-Conductor Cat.6A , Tool-free, Shielded, 90 degree, H.D. version, fits 0.5U panel
IKC1T68TPZA0	RJ45, 8-Conductor Cat.8.1/Class I, Tool-free, Shielded, 90 degree, H.D. version, L =34.5mm, fits 0.5U panel